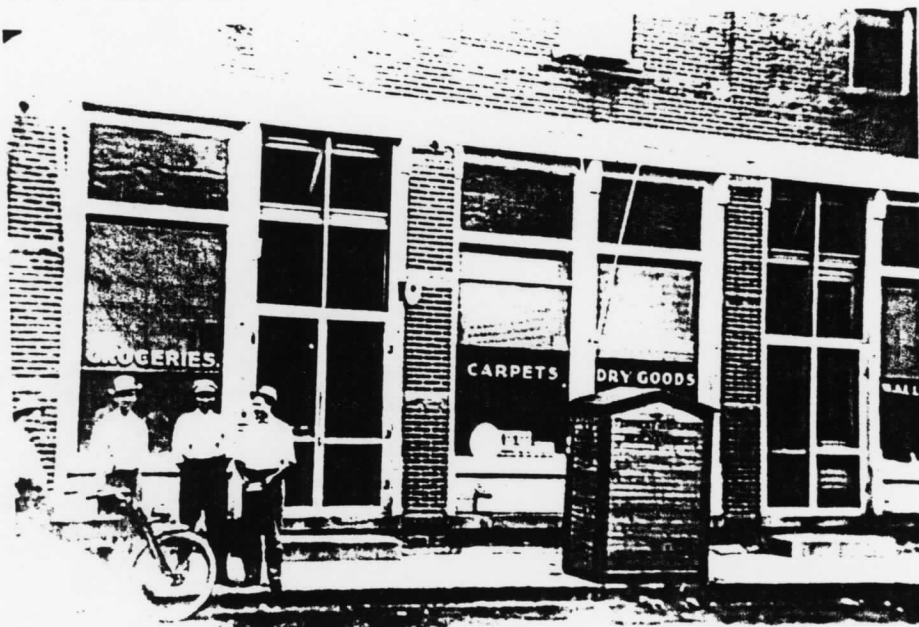


# DALEVILLE

# LOOK BACK TO YESTERDAY



LOOKING SOUTH EAST.  
PHOTO TAKEN - STANDING  
ON WEST SIDE OF MAIN ST.  
WHERE THE PARKING LOT IS  
BY RAILROAD. BUILDING  
TO RIGHT IS THE OLD  
ELEVATOR, NOW THE RIFFEY  
FEED AND GRAIN.



GROCERY AND DRY GOODS  
DEPT. STORE. THIS  
BUILDING NOW HOUSES THE  
DALEVILLE AUCTION AND  
FURNITURE STORE.



DALEVILLE MAIN STREET.

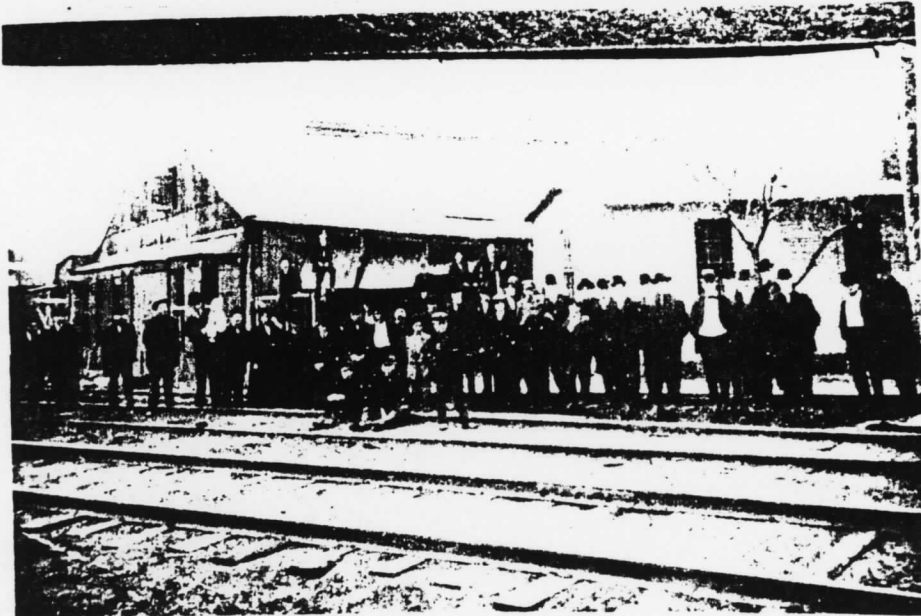
# Around Town



STANDING ON RAILROAD TRACKS LOOKING EAST. NOTICE DALEVILLE DEPOT. LITTLE BUILDING ON THE LEFT. LOOKING DOWN THE TRACKS.



UNION TRACTION STATION NOTE PEOPLE WAITING FOR AN INTERUBAN CAR. THIS WOULD BE THE FRONT OF DAVID & ART GETTS GARAGE ON STATE ROAD 32 NOW BEING REMODELED BY KENNY STOTTLEMYER.



DALEVILLE GLASS FACTORY. EAST OF TOWN ON SOUTH SIDE OF THE "BEE LINE" R.R.