

**THIS
MEMORIAL
MAP
OF**

GARDENS of MEMORY

CEMETERY AND MAUSOLEUM



GARDEN VIEW

**FUNERAL
HOME**

**IS PROVIDED AS AN ADDITIONAL
SERVICE TO OUR LOT OWNERS,
FRIENDS AND COMMUNITY**

What Does Garden View Offer Over Other Funeral Homes?

CONVENIENCE...EASY TO REACH FROM ANYWHERE

- * No downtown traffic to fight
- * No streets to cross, 150 space parking lot next to front entrance
- * Suburban Serenity

DESIGNED FOR ALL, INCLUDING HANDICAPPED...

- * No curbs, steps, ramps, elevators; entire facility on one level
- * Doors and restrooms designed for walkers, wheelchairs, etc.
- * Covered drivethru entries for weather protection
- * Lighted parking lots for safety

OTHER UNIQUE FEATURES...

- * Expandable viewing rooms and chapel facilities to meet each need
- * Separate smoker and non-smoking lounges
- * For those families using Gardens of Memory, the safety of no funeral procession entering a public highway. Access to the cemetery is through Delaware County's only public covered bridge
- * Taped funeral service for those who request it

GARDEN VIEW

FUNERAL
HOME



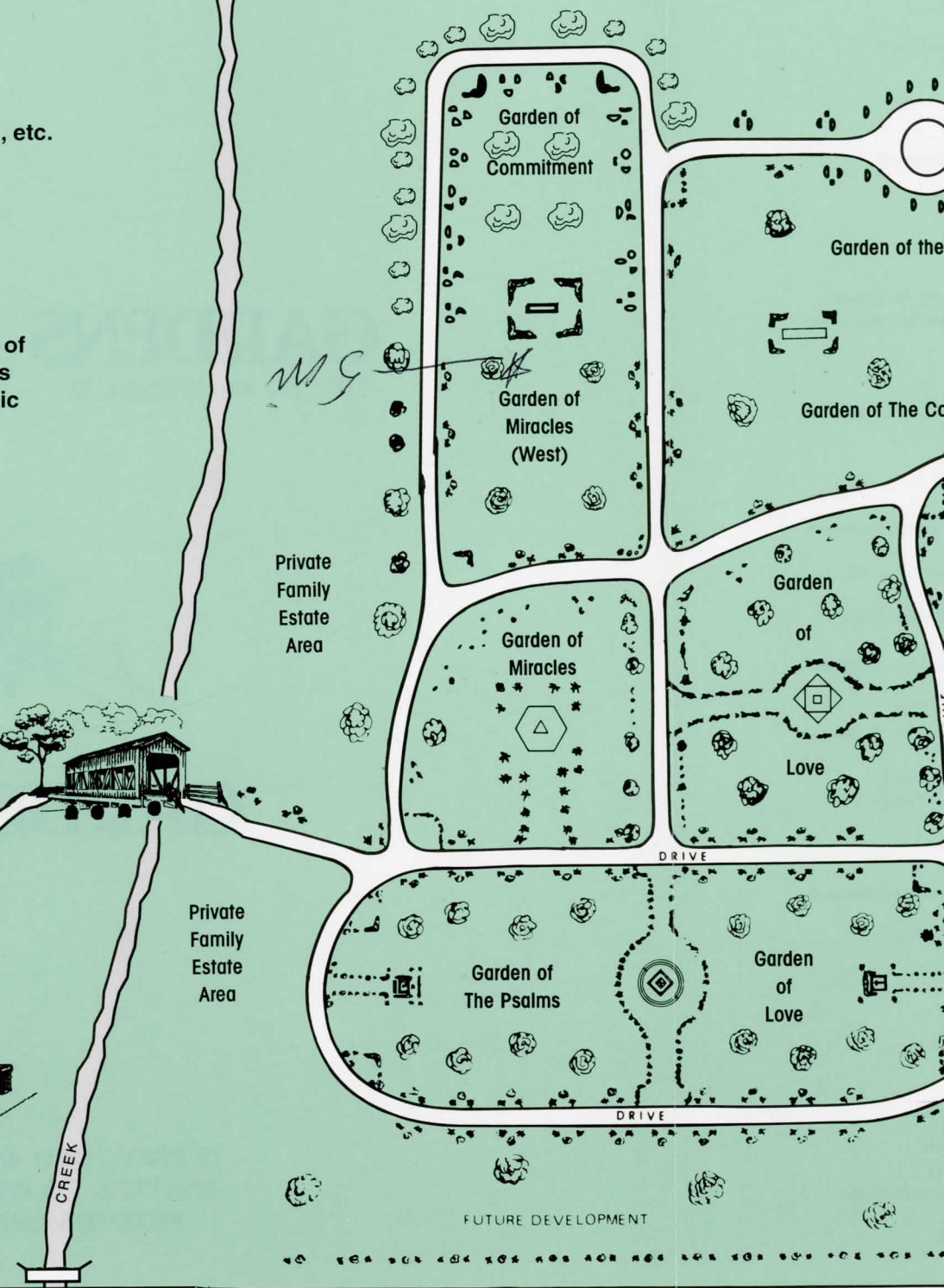
150 space parking lot

omes?

, etc.

of
s
ic

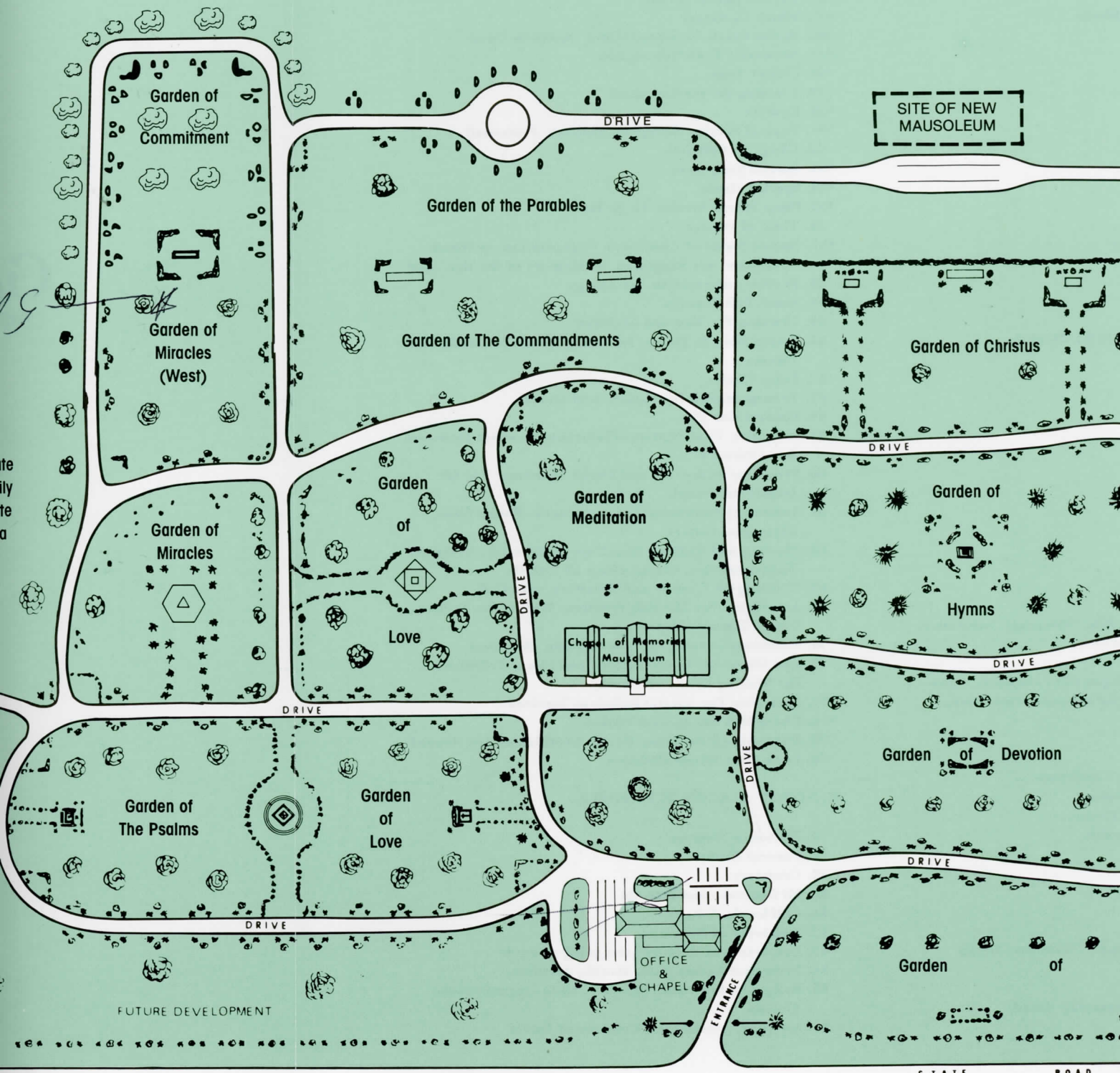
A well planned cemetery/funeral home
combination properly endowed and designed
to serve this and future generations
conveniently with dignity.



A well planned cemetery/funeral home
combination properly endowed and designed
to serve this and future generations
conveniently with dignity.

GARDENS of MEM

CEMETERY AND MAUSOLEUM



Final Resting Place of:

NAME

GARDEN

LOT SPC

1. _____

2. _____

3. _____

