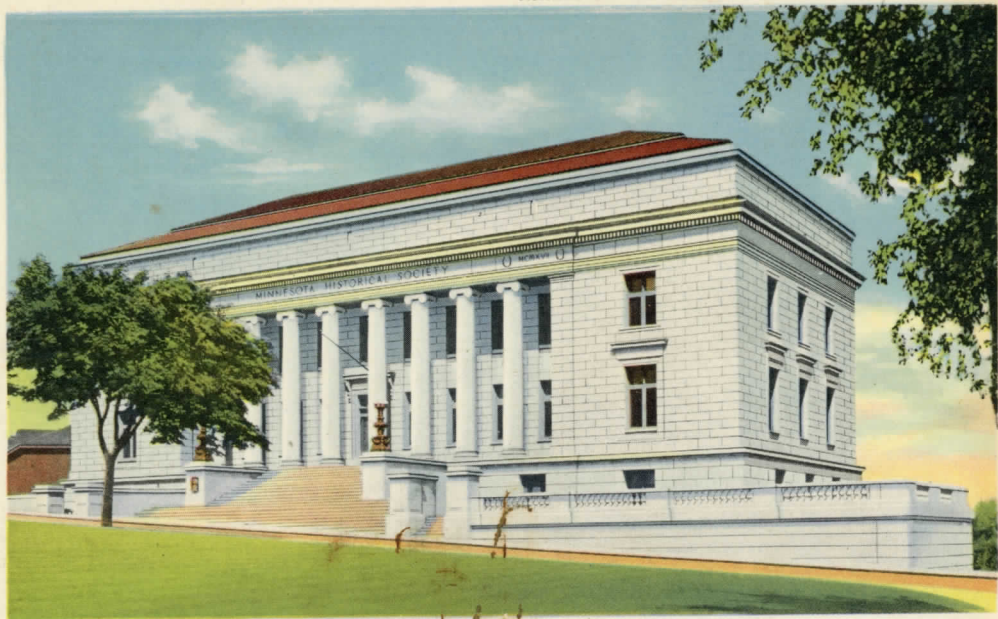


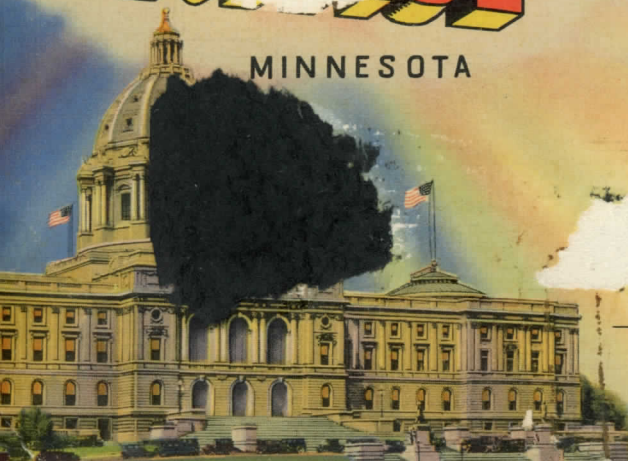
28-4

MINNESOTA HISTORICAL BUILDING



ST PAUL

MINNESOTA



May 24

POSTAGE

1½¢

WITHOUT

MESSAGE

28-A

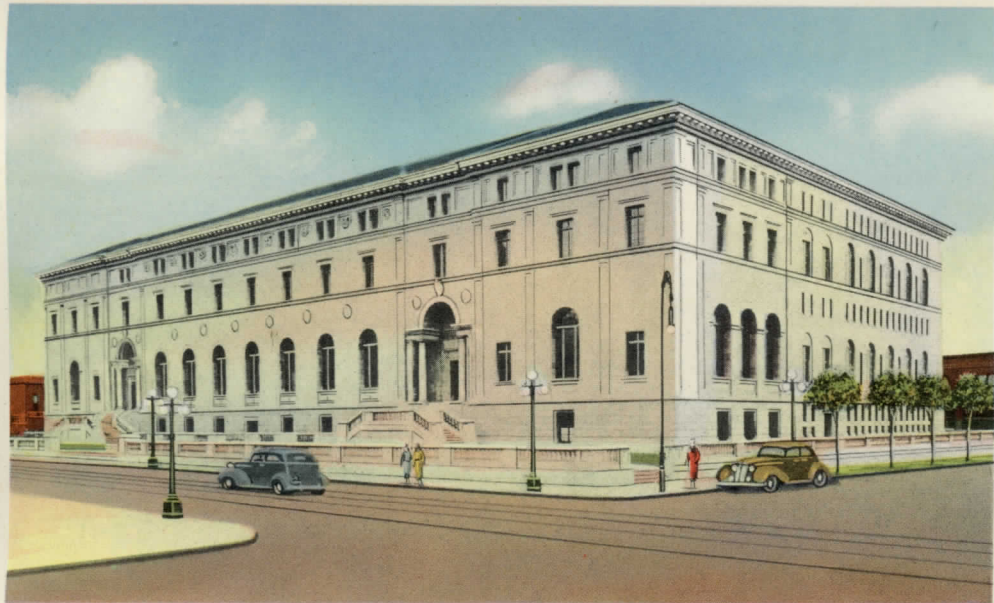
Dramatic Moments in Saint Paul's Yesterday

- 1805—A log fur trading hut in the wilderness was chosen by Lieutenant Zebulon M. Pike, under orders to "proceed with all possible diligence up the Mississippi," as the logical site for a military outpost.
- 1820—Land was purchased from the Indians on which Fort Snelling, the first military reservation in the Northwest, was built and named after Colonel Snelling, gallant commander.
- 1841—The future city of Saint Paul was marked by a crude chapel dedicated by Father Galtier to "Saint Paul, apostle of nations".
- 1850—Just after the establishment of Minnesota Territory in 1849, Saint Paul was represented by a colony of white people and was already a center of transportation and a thriving commercial river port.
- 1858—Minnesota was admitted to the Union and Saint Paul was acknowledged the capital, center of legislation and government as well as of trade and distribution.
- 1884—Saint Paul had reached the 100,000 population mark.
- 1930—Population 271,606.
- 1931—As it has built soundly and wisely in the past, Saint Paul builds for the future. A private and public building program totalling in excess of \$50,000,000 has materially changed the skyline and the complexion of the downtown district. At the same time improvements in the already extensive park system have aided greatly in beautifying the residential districts.
- 1936—Population 283,835.

★ SAINT PAUL TODAY ★

Saint Paul in the heart of the Land of Lakes is the capital city of Minnesota, a city whose history teems with

from one of the eminences upon which Saint Paul is situated. Nearly fourteen years the builders worked on



WHITE BEAR YACHT CLUB



CONSERVATORY, COMO PARK



FORMAL GARDENS, COMO PARK



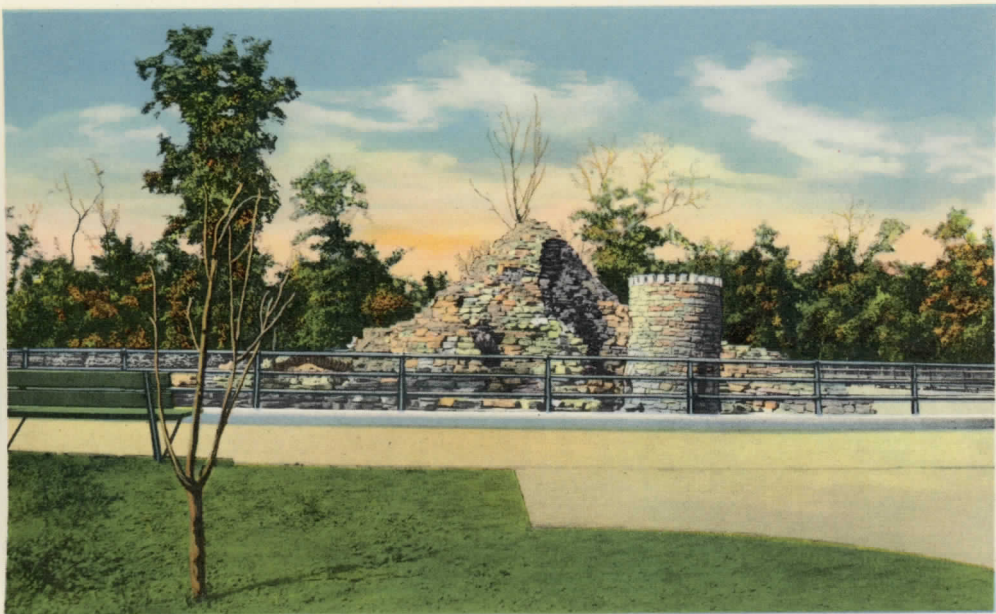
FLOWER BEDS, COMO PARK



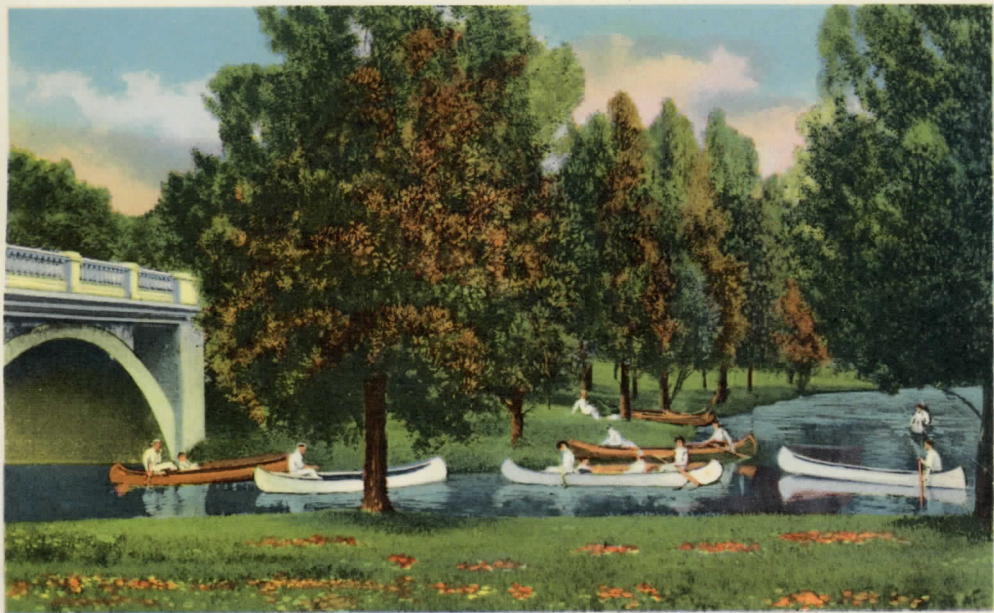
INDIAN MOUNDS PARK



MONKEY ISLAND, COMO PARK



SCENE IN PHALEN PARK



ST. PAUL CATHEDRAL





WRIGHT PHOTO

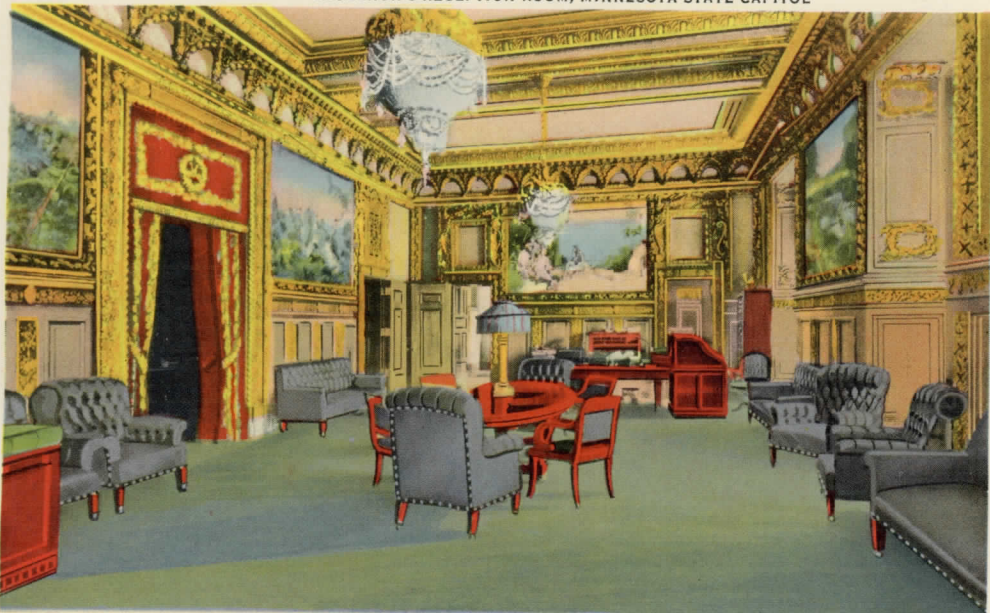
AEROPLANE VIEW SHOWING MINNESOTA STATE CAPITOL, STATE OFFICE BUILDING



AND ART INSTITUTE

WRIGHT PHOTO

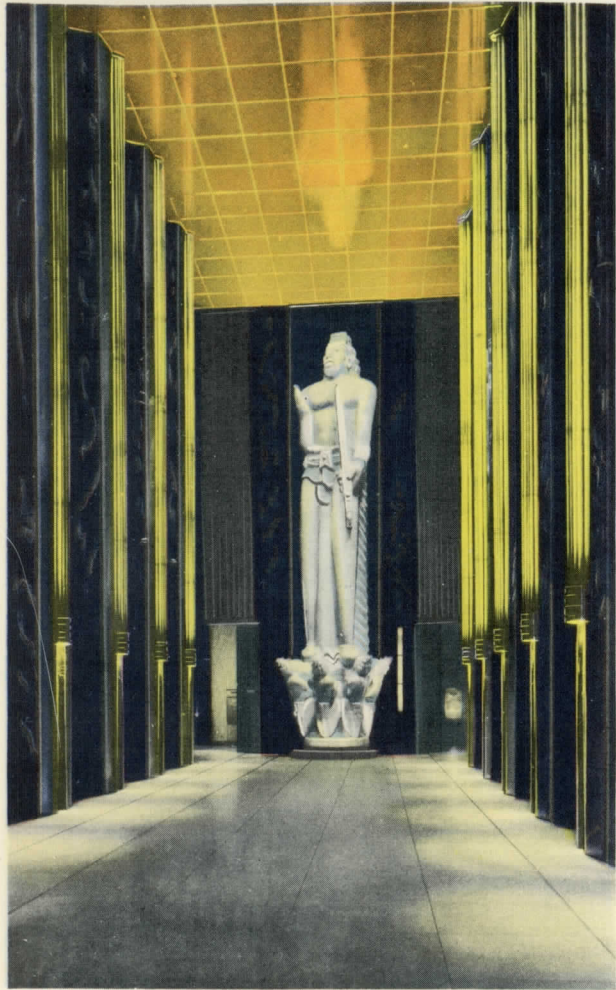
GOVERNOR'S RECEPTION ROOM, MINNESOTA STATE CAPITOL



ST. PAUL CITY HALL AND RAMSEY COUNTY COURT HOUSE



CARL MILLES' INDIAN STATUE "PEACE"

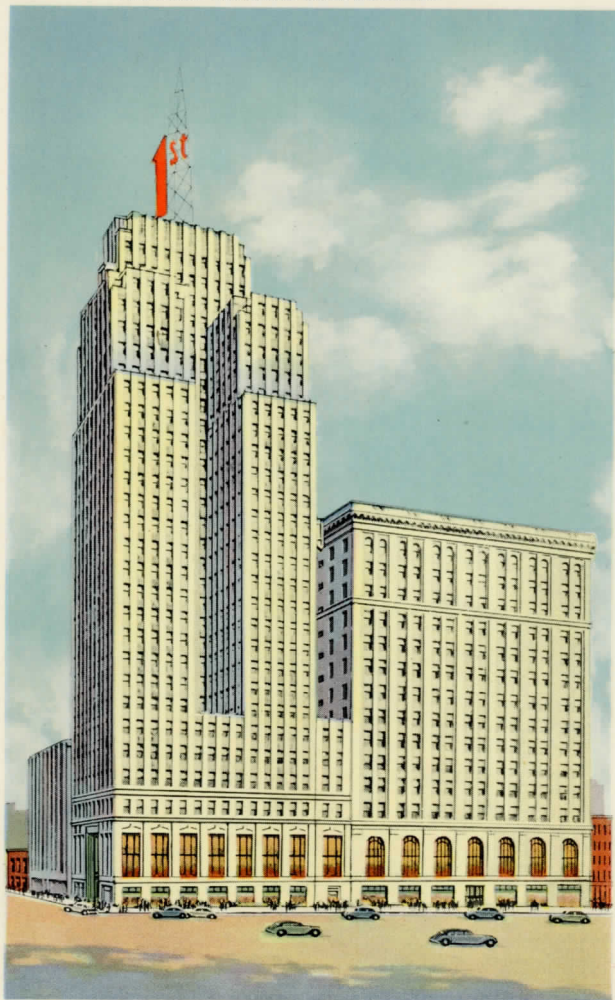


CITY HALL AND COURT HOUSE

U. S. POST OFFICE AND CUSTOMS HOUSE



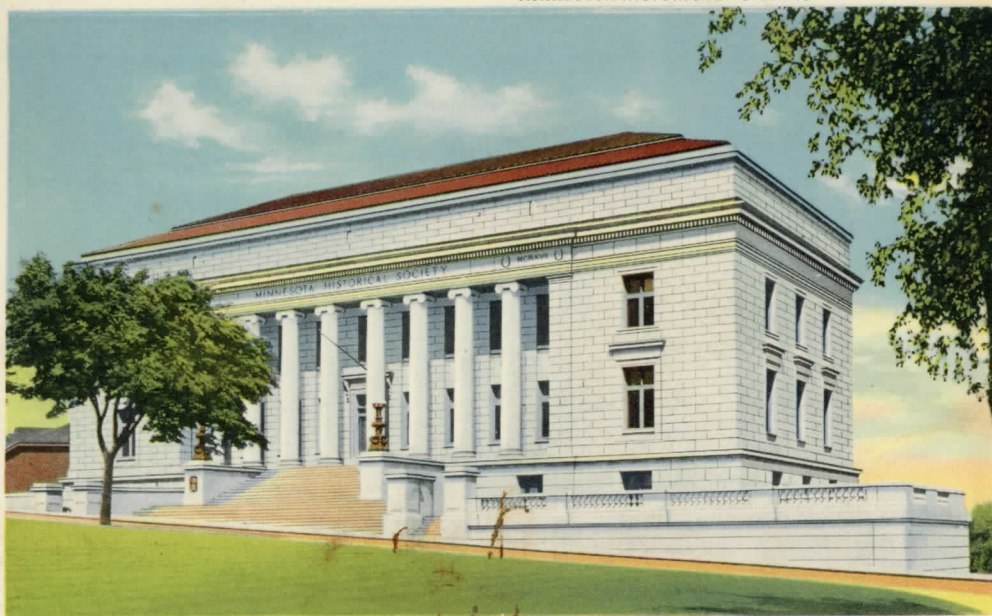
THE FIRST NATIONAL BANK BUILDING



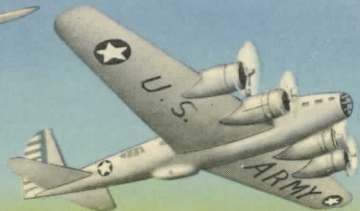
UNION STATION



MINNESOTA HISTORICAL BUILDING



28-B



KEEP 'EM



FLYING



★ Miss Norma Hana

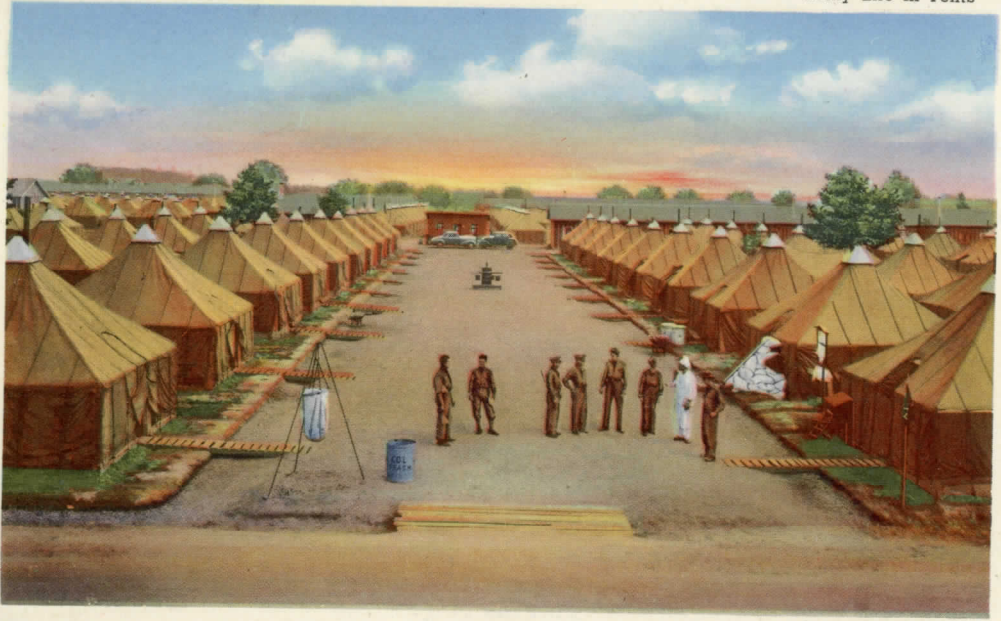
7th St

Muncie, Indiana

28-B

THE U. S. ARMY—*Its Branches of Service*

Infantry The basic arm is the Infantry, the foot soldiery of the army. Armed with rifles and other automatic weapons of small caliber, the Infantry forms the nucleus of the plan of battle. With the growing emphasis on speed, this unit has been streamlined for greater effectiveness and mobility. Though they necessarily depend upon marching, the increased use of motor carriers makes possible the quick transportation of large numbers of men over long distances.



"On the March"



PHOTO BY U. S. ARMY SIGNAL CORPS

At the Rifle Range



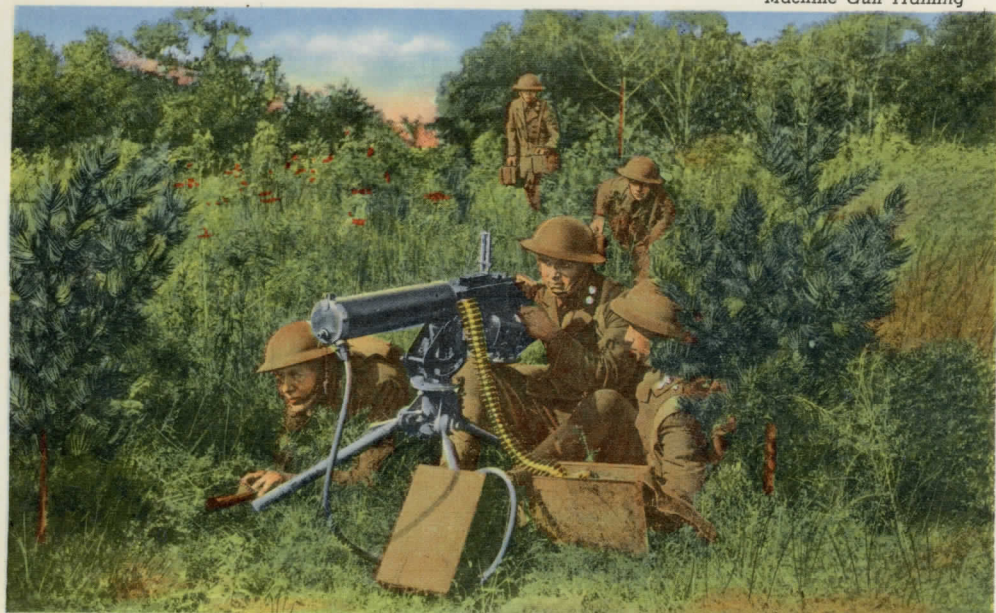


PHOTO BY U. S. ARMY SIGNAL CORPS

U. S. Infantry



PHOTOS BY U. S. ARMY SIGNAL CORPS

© CURT TEICH & CO., INC.

Mechanized Infantry

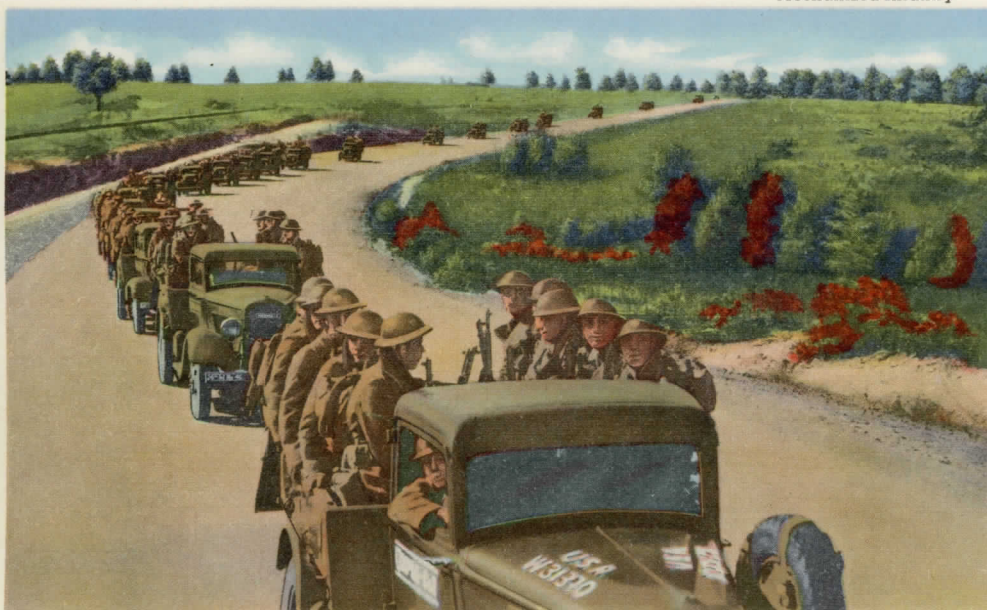


PHOTO BY U. S. ARMY SIGNAL CORPS

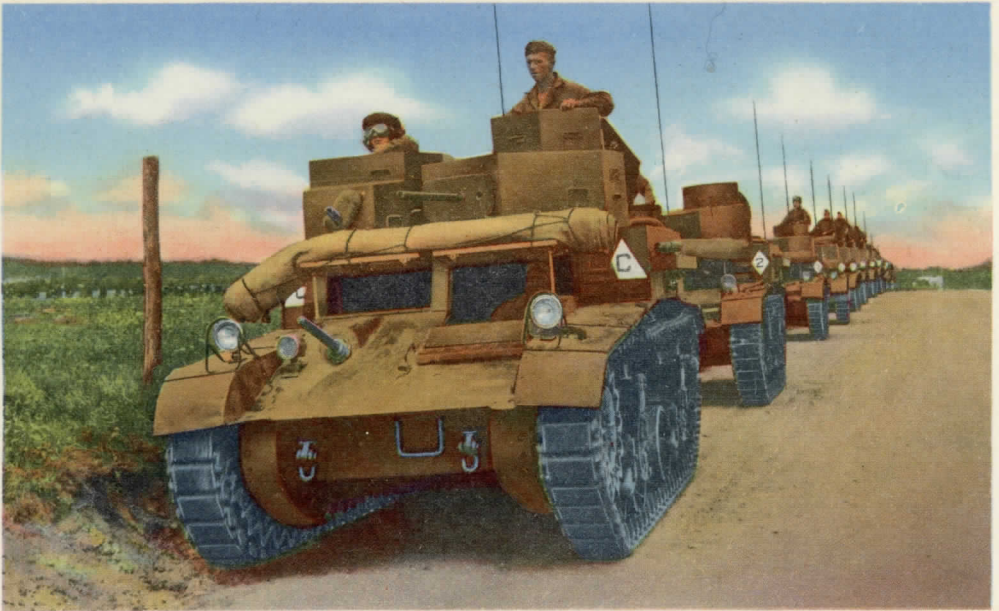


PHOTO BY U. S. ARMY SIGNAL CORPS

Field Artillery Firing under Camouflage



PHOTO BY U. S. ARMY SIGNAL CORPS

155 mm. Gun, Field Artillery

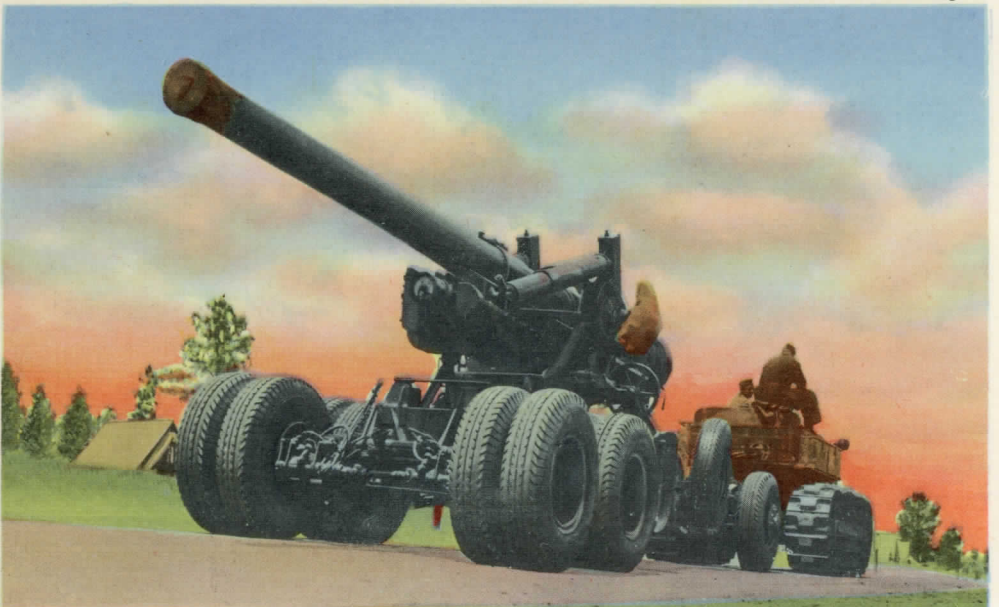
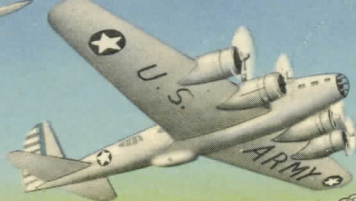


PHOTO BY U. S. ARMY SIGNAL CORPS



KEEP 'EM

FLYING



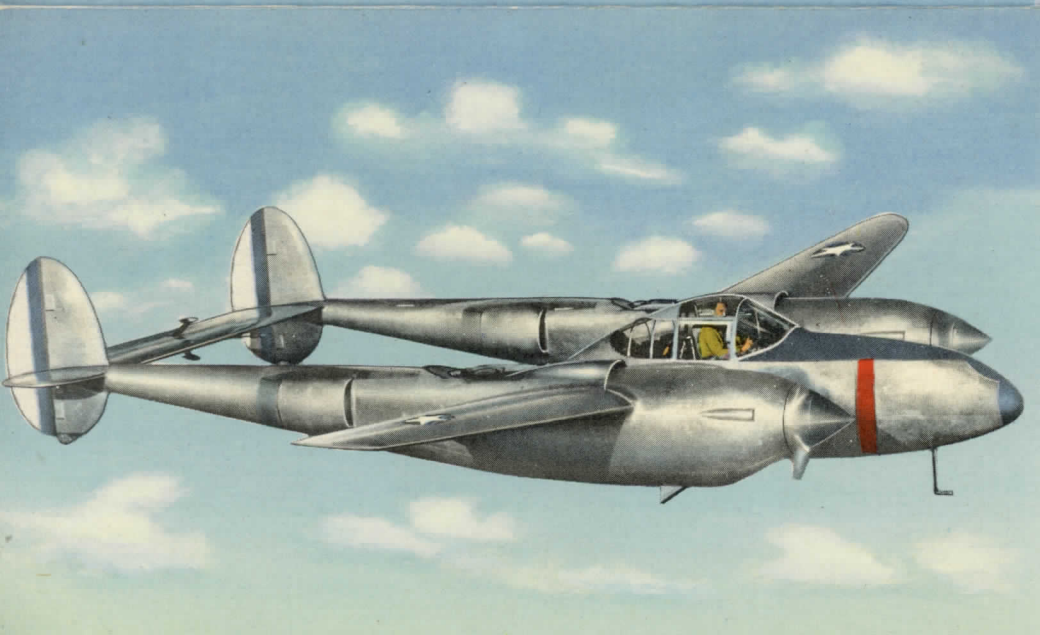
© CURT TEICH & CO., INC.

23-B



FLYING FORTRESS

© CURT TEICH & CO., INC.



LIGHTNING INTERCEPTOR

© CURT TEICH & CO., INC.

PARACHUTE TROOPS



Airplane Listening Post and Giant Searchlights



PHOTO BY U. S. ARMY SIGNAL CORPS

Anti-Aircraft Guns, Coast Artillery

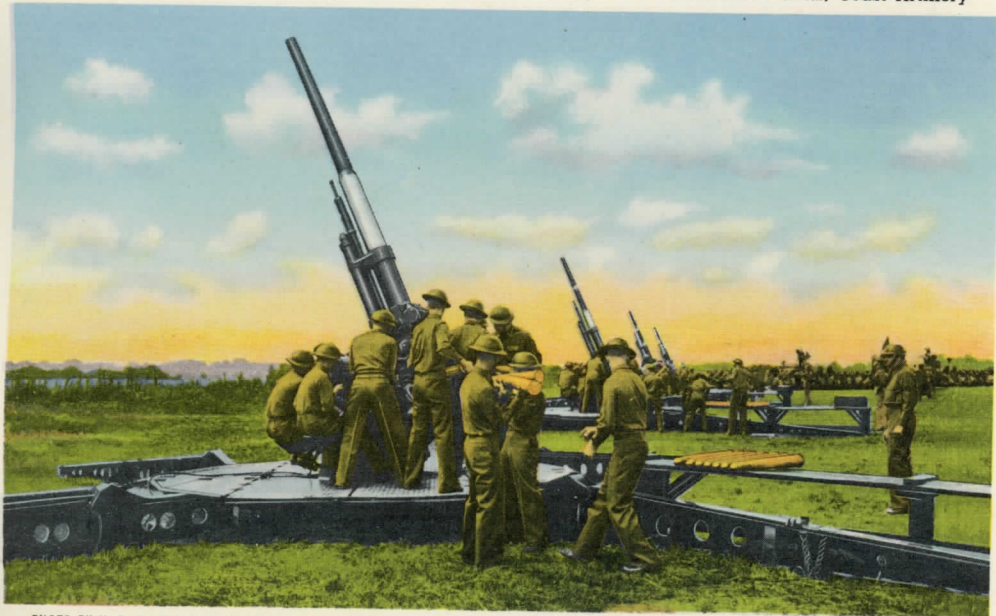


PHOTO BY U. S. ARMY SIGNAL CORPS

Anti-Aircraft Fire from Scout Car

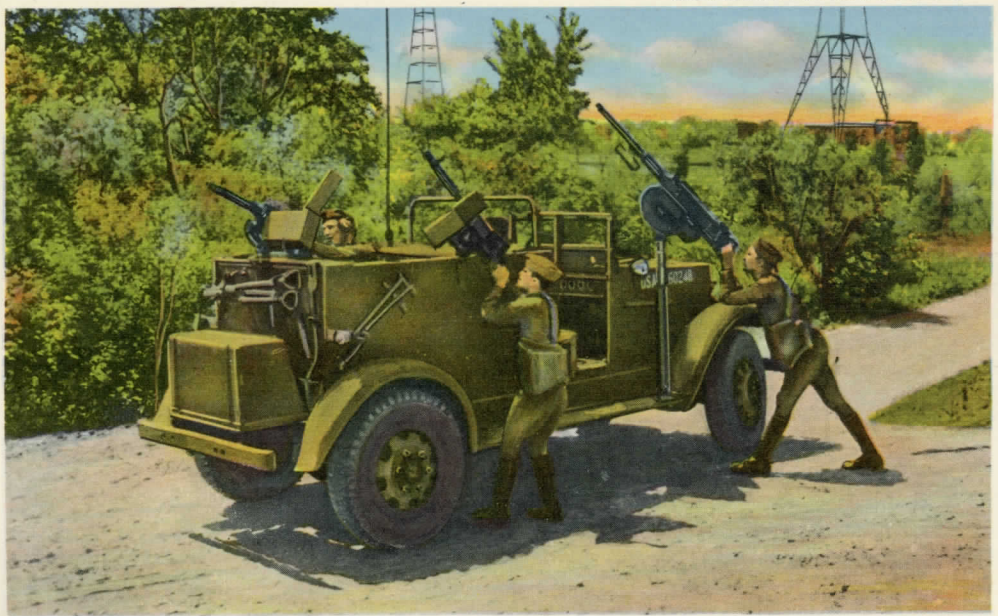
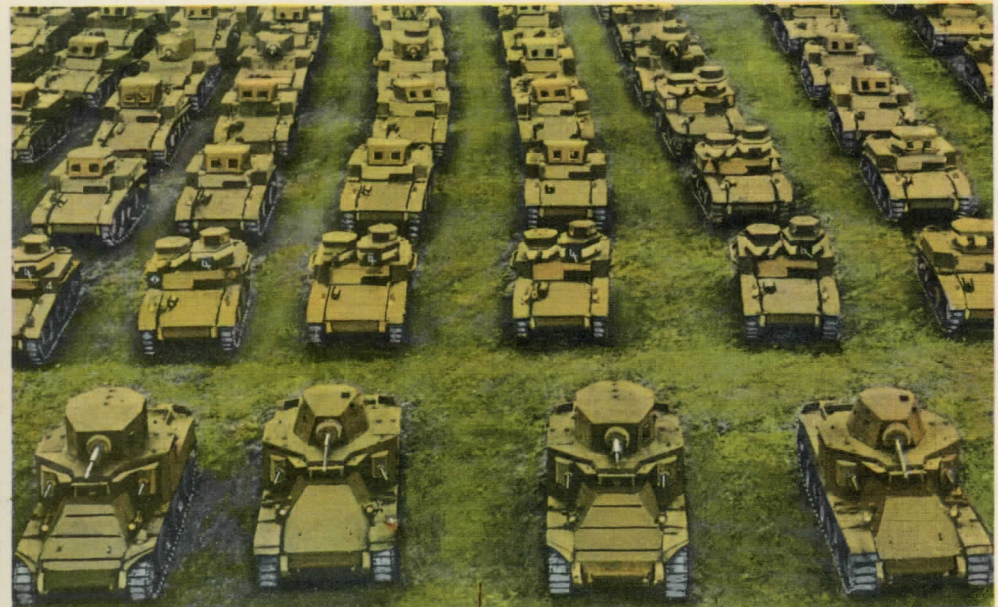


PHOTO BY U. S. ARMY SIGNAL CORPS

Bantam Cars, U. S. Armored Division



Tanks, U. S. Armored Division



PHOTOGRAPH BY SIGNAL CORPS, U. S. ARMY

28-c



Manitou, Colorado

The Bridal Chamber is one of the most interesting of the many caverns in the Cave of the Winds. Better than perhaps any others it shows nature's handiwork in stalactites, stalagmites, and crystallized formations — the result of centuries of slow action of mineral laden waters.

SANBORN SOUVENIR CO., DENVER, COLO.

POST CARD

PLACE
ONE CENT
STAMP
HERE

28-c

28-D



5336. Sunrise from Pikes Peak. Altitude 14,110 Feet

SUNRISE ON PIKES PEAK

There are many marvelous pictures which greet the eye wherever one may linger among the mountains of the Great Centennial State, but no trip to Colorado is complete unless one has stood on the summit of Pikes Peak, "The Sentinel of the Rockies," and beheld the glory of one of her famous sunrises. The splendor of this scene must be left largely to the imagination, as the color effect and sensation one experiences defy description.

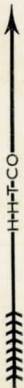
THIS SPACE FOR MESSAGE



POST CARD

ADDRESS

—
STAMP
—



28-D