

*The Story  
of a Beautiful New Cemetery*

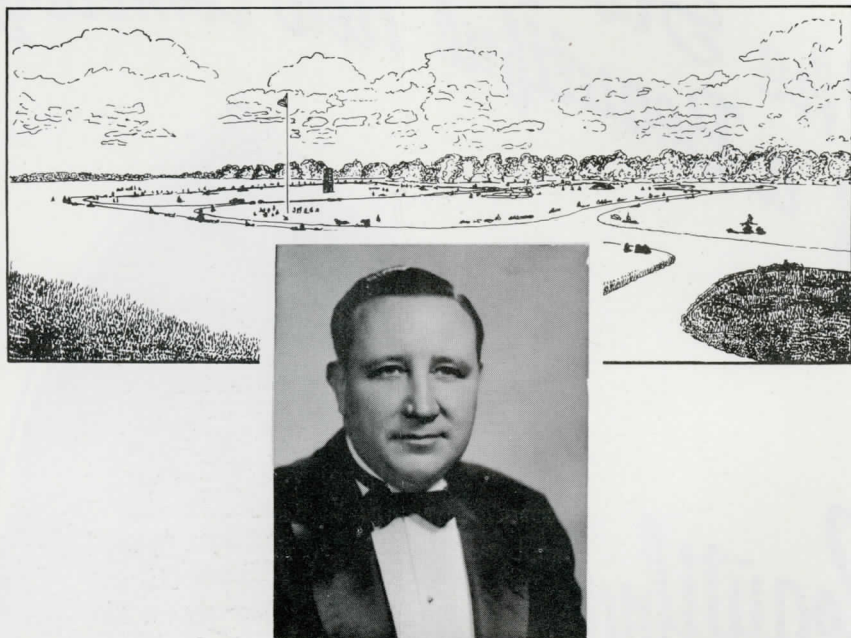
Beautiful  
GARDENS  
of  
MEMORY

MUNCIE  
INDIANA

NORTH ON  
STATE ROUTE 3



 THE TOWER OF HYMNS



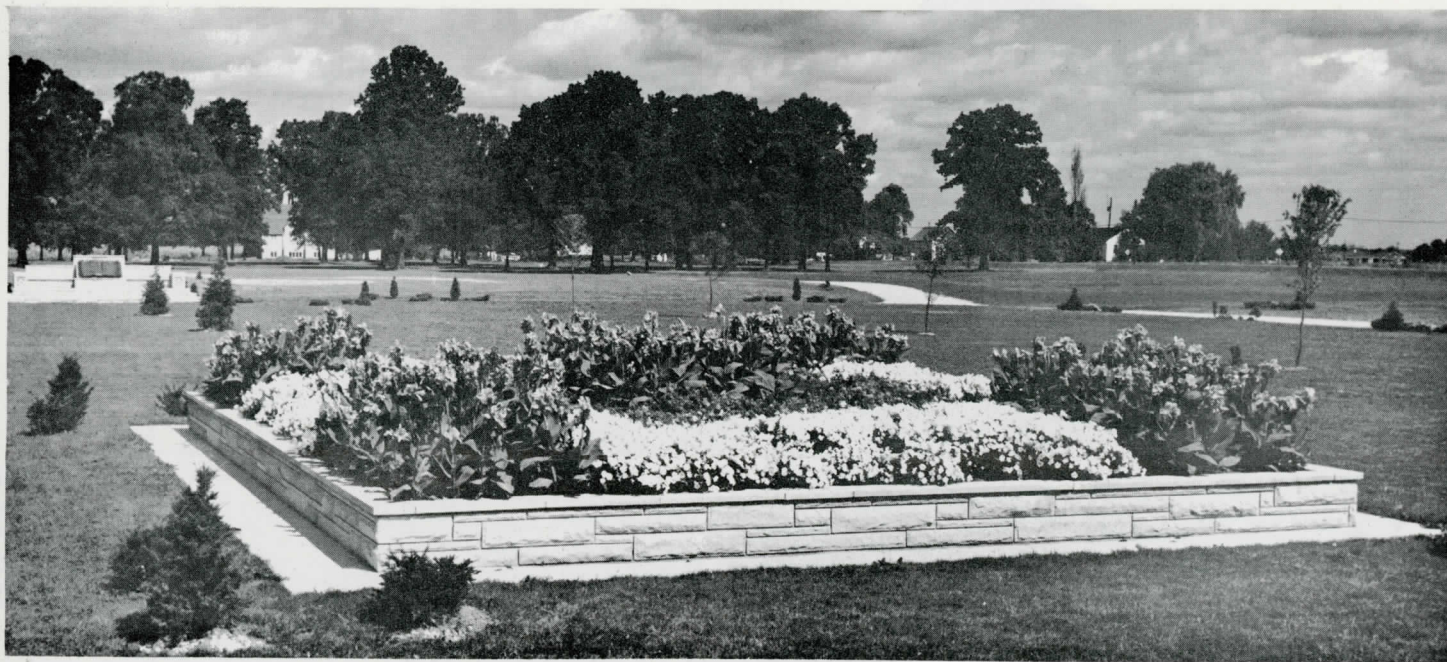
Many families never see a new cemetery originate during their lifetime. Thus it is an unusual experience to watch a cemetery grow from an idea and a farm to become an entirely new concept of burial property, entirely in keeping with present day practical thinking and with no strings attached to century old outmoded customs.

The builder of Gardens of Memory was educated in the Gaston schools and at Ball State, he entered the cemetery business in 1935, and has built three of the most beautiful and successful cemeteries in northern Illinois. It is a natural inclination to come home and use these years of experience to build an even finer cemetery at home.

It is Mr. Randall's concept that cemeteries should *not* be profit making institutions. Instead they should create stable, well paying jobs for permanent, well trained employees for many years in the future, and that the complete planning shall take all these things into consideration.

How these plans can be accomplished and the progress of Gardens of Memory during its first two years, and the many plans for the future are told in the following pages.





Building a cemetery into Beautiful Gardens requires years of planning, for the present and the future. The entire area must be planned and each Garden then planned so that the entire park, and each Garden, will always be an inspiration to all visitors. This is accomplished by building a theme into each Garden.

All peoples today are taught from childhood our rewards for a good life. These teachings come directly from the Bible. Thus each Garden will contain a Bible Story and a feature exemplifying this story.

An entire garden then becomes a living memorial to each family represented in that Garden.

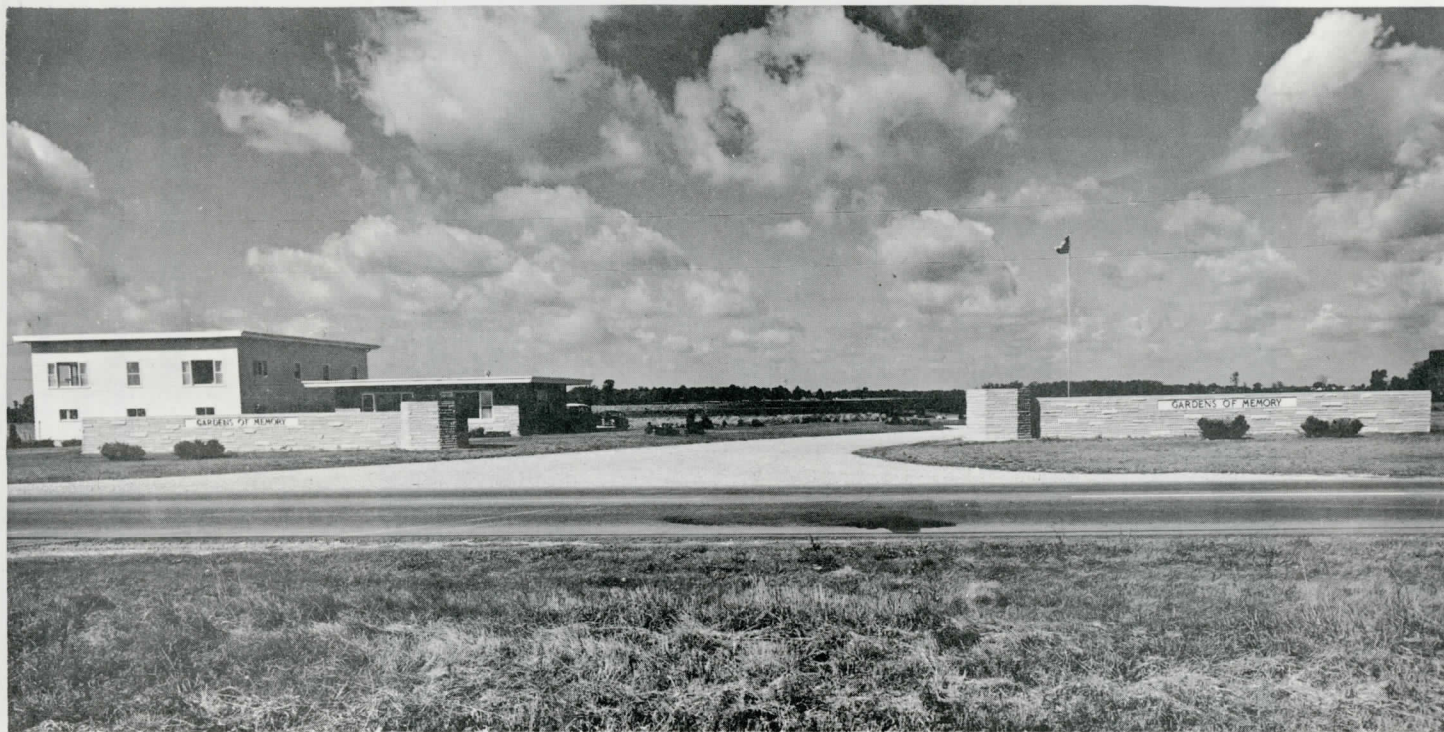
*All Memorials of Everlasting Bronze  
Placed Flush With The Lawn . . . . .*



No more fitting tribute to one's life can be had than a fine Bronze Memorial in a beautiful Garden. Memorials placed in this manner indicate that each family recognizes equality and that it is not practical for one to outdo the other in memorialization.

It is the thought of many enlightened people that large upright tombstones are not desirable and do not in any measure assuage the grief of surviving kindred or stand as fitting tributes to the memory of the departed. In recent years, these practices have yielded in a large degree to the theory that reverence for the dead is *more earnestly* expressed by trees, plants and flowers arranged so as to form a pleasing landscape, both beautiful and harmonious, and emblematic of the human life that has gone before.





The entrance built of stone from Crab Orchard is planned for safety, beauty and is inviting. The Administration building, built of Indiana limestone, commands a view of the entire Park and is accessible to all. The Maintenance building also shown is one of the finest and most complete in cemetery construction.



## *GARDENS OF MEMORY — AIR VIEW — AUGUST 1956*



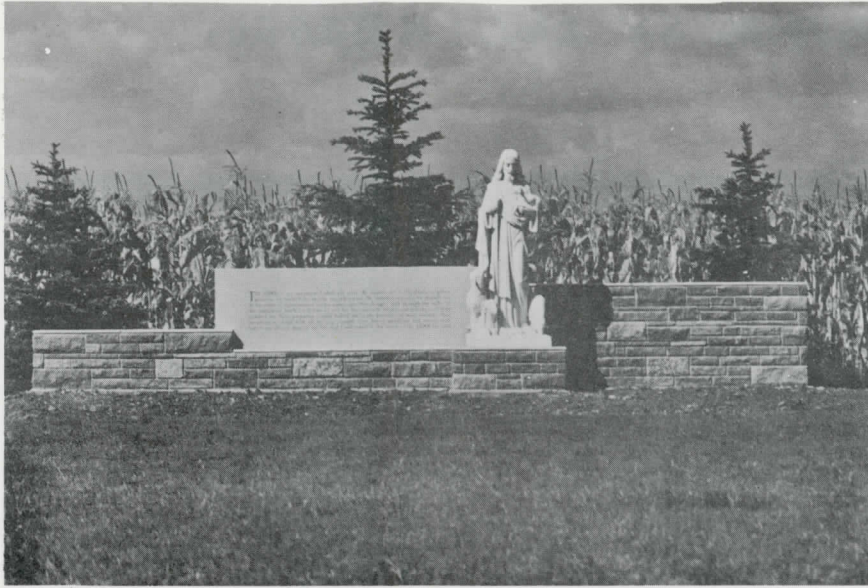
### **AN AIR VIEW SHOWING FIRST EIGHTEEN MONTHS PROGRESS**

The Garden of Devotion, showing Bible and Flag, is in the foreground, The Garden of Hymns with the beautiful Tower of Hymns is in center, and in the background is the beautiful features of the Good Shepherd and the Christus. To the right among the native trees is the Masonic

Garden and the Garden of "The Last Supper" and "Gethsemane."

As the years go by each Garden becomes more individual and beautiful. Their beauty can never be spoiled by upright monuments or headstones.





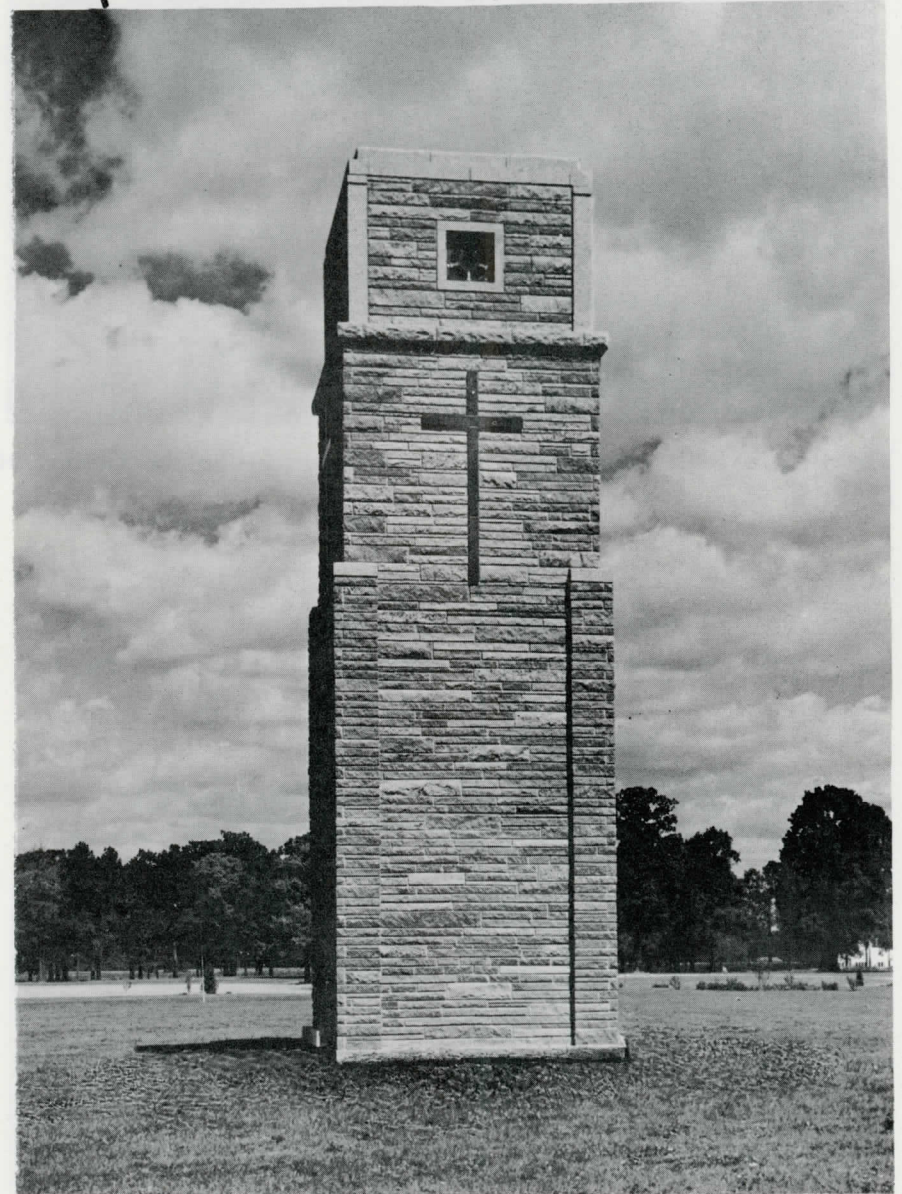
### THE GOOD SHEPHERD AND THE CHRISTUS

Two beautiful, life size memorials of Italian marble, carved in Italy and shipped direct to Gardens of Memory in July, 1956.

The Good Shepherd contains the 23rd Psalm in a Wall of Granite.

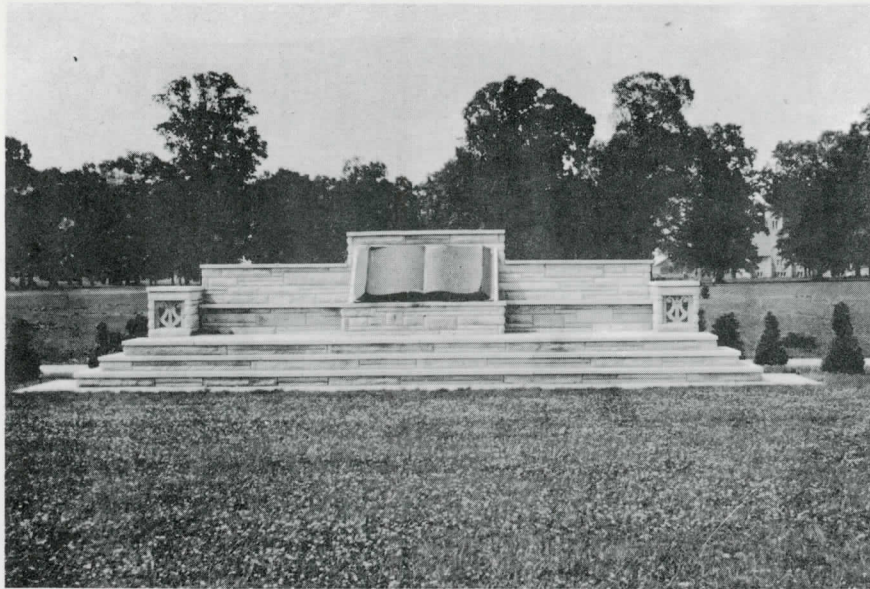


## THE TOWER OF HYMNS



The beautiful chimes complete the picture of reverence with beautiful lawns, flowers and shrubs.





The Bronze Bible containing the Lord's Prayer — in the Garden of Devotion is admired reverently by all visitors.



Christ delivering the "Sermon on the Mount" is cut in stone in the wall back of the Bronze Bible.

## THIS IS YOUR CEMETERY

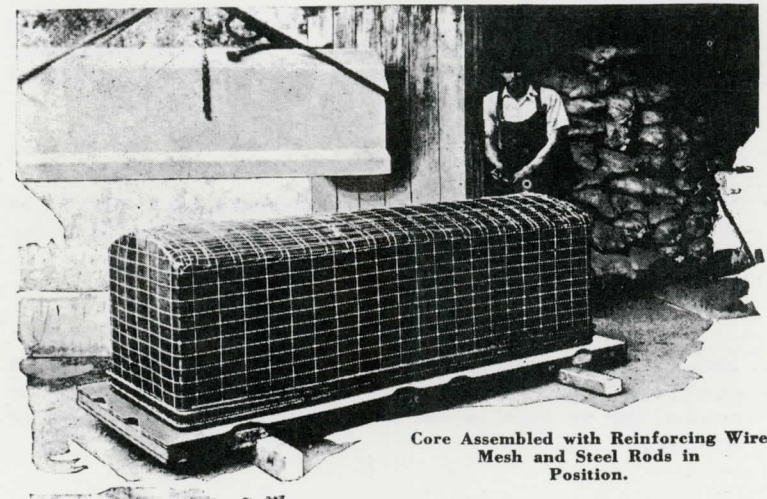
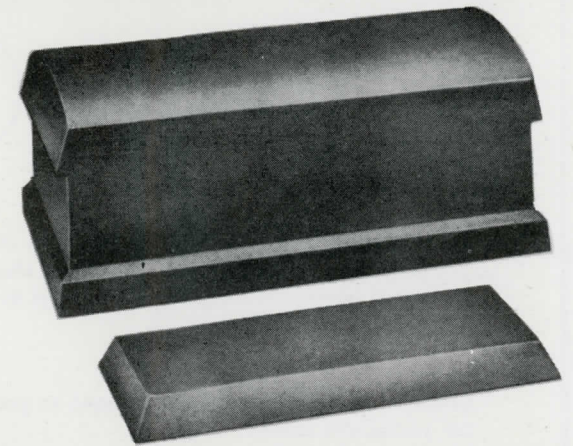
Your cemetery has taken many things into consideration in its planning.

The first thing of course is the ease with which it can be cared for in all future years.

Second, to provide an income to pay for this care. One part of this is the income from a tremendous endowment fund established with the trust department of the Merchants National Bank of Muncie.

The other is the provision for the sale of vaults and memorials to its families only by the cemetery.

By planning in this manner the cemetery can offer better products to its families at lower prices and provide year 'round work for its employees. At the same time the cemetery uses the excess income for maintenance and administrative purposes.



Core Assembled with Reinforcing Wire Mesh and Steel Rods in Position.



# PERPETUAL CARE

is an expression that implies that the care of a burial estate has been provided for all future years. In many states this expression is not permitted because nothing has been found to be "perpetual."

Gardens of Memory has been planned to provide for three provisions for permanent care:

- (1) Each garden and all of the gardens combined will always be *easy* to maintain. Every tree, shrub, flower and memorial is placed to make maintenance *easy*.
- (2) The purchase of vaults, grave services, bronze memorials and foundations direct from the cemetery by its families will provide an income that in itself will maintain the cemetery.
- (3) A percentage of all cash receipts, regardless of the source, is placed in an irrevocable Trust Fund. Only the interest from this fund may be used for maintenance purposes.

The most valuable part of any burial estate is its plan and provision for its upkeep and care tomorrow. A beautiful, well-groomed garden of tomorrow represents a beautiful memory of each family represented there.

It is impossible to maintain any type of property and to plan for its future care without providing a definite income for this care during its years of utility.

Such is the most unusual plan of care that the management of Gardens of Memory has put into effect. No other cemetery in this part of the country, that we know of, has been so complete in its planning for the future.