

















棧記

957



鴨羹菜糖集醬料雜貨平貨發

25 串九

25 山紅

45 小

45 小

海



POWELL & MASON STS.

503

MUNICIPAL RAILWAY OF SAN FRANCISCO

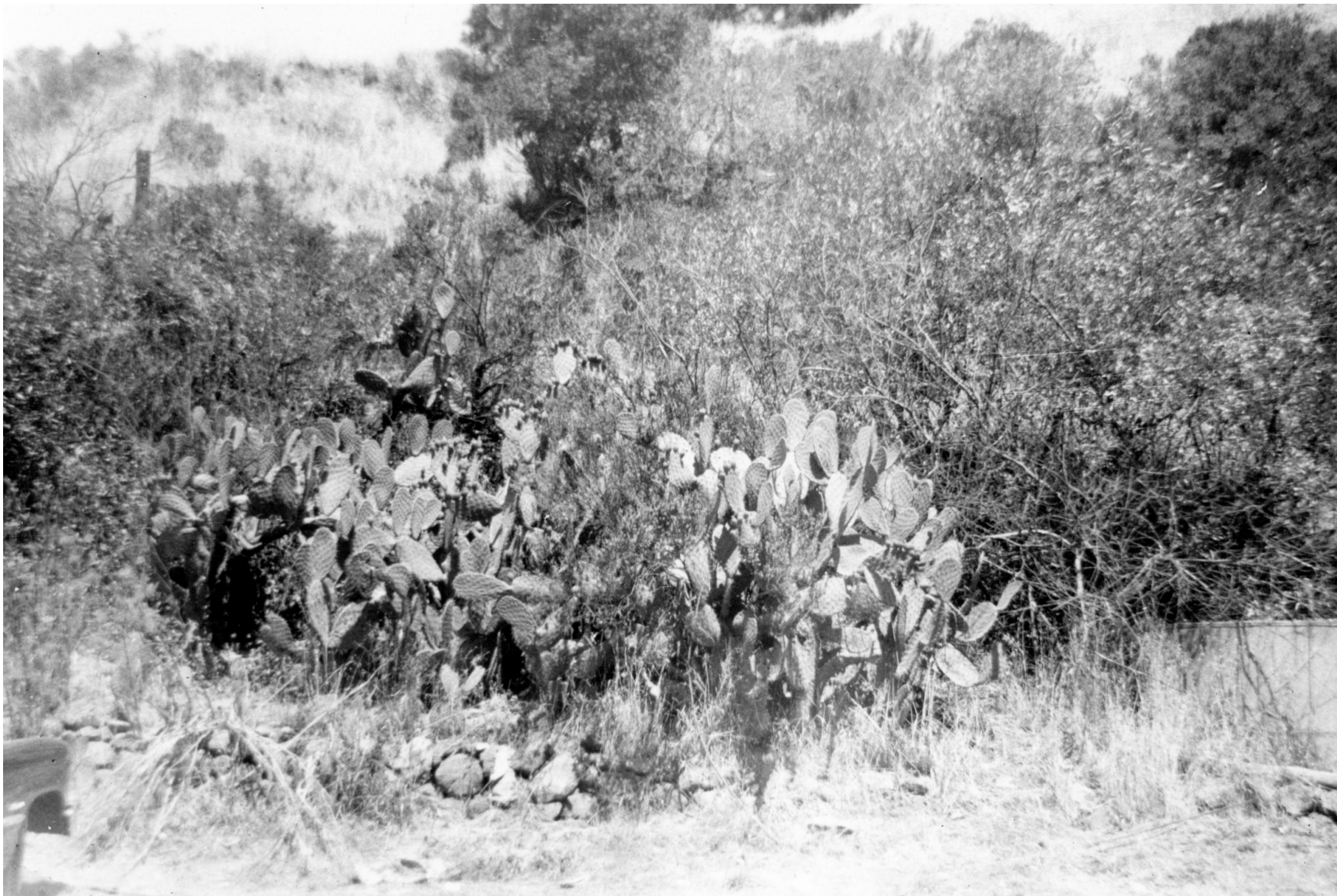




















Ph12322-021_PictureIndex(CaliforniaTrip-1958).txt

Trip To Delaware County, Indiana to California

August 1958

Walt and Norma Haas Robbins Family (Walt Sr, Norma, Walt Jr (Clif), Phil and Janet)

Vehicle: New 1958 Chevrolet Bel-air

Main purpose of visit: To visit with Marj & Frank VanCouwenberghe family who lived in San Anselmo, California

These Pictures were taken by Walt Robbins, Jr, ID0001 with his Kodak Brownie Camera using 127 Black & White film

Pictures: Ph12322-001 to 020.jpg (600dpi, 8-bit grayscale)

=====

001: Lake Tahoe

002: Ship in San Francisco Bay

003: Road below from top of mountain (Rockies)

004: Ocean liner in background, Sailing Ship, rail cars (San Francisco)

005: Golden Gate Bridge, San Francisco

006: Tiger, San Francisco Zoo

007: San Francisco Bay

008: Pet Chipmunks belonging to Marj & Frank VanCouwenberghe, San Anselmo, California

009: Store scene in Chin Town, San Francisco

010: Cable Car, San Francisco

011: Alcatraz Prison, San Francisco

012: Sailing Ship "Balcutha", San Francisco Bay

013: Mountain with snow on it at right

014: The arrow indicates a deer on a hillside on the way to California

015: Canyon on bottom and scrub trees at top

016: Cactus in California (The only ones we saw the entire trip)

017: Mountain Scene

Ph12322-021_PictureIndex(CaliforniaTrip-1958).txt

- 018: Desert scene, trying to show the desolation, but mostly I got a blurred image
- 019: Mountain, west side of Denver
- 020: Saw mill